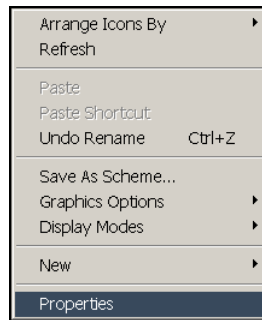
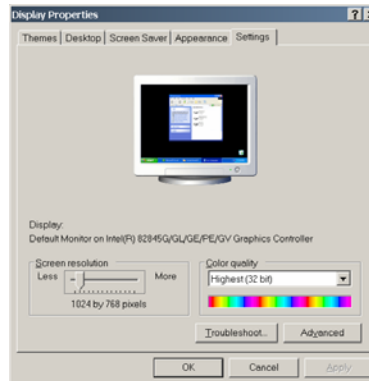


# How to change the hardware acceleration settings in Windows 98 / XP

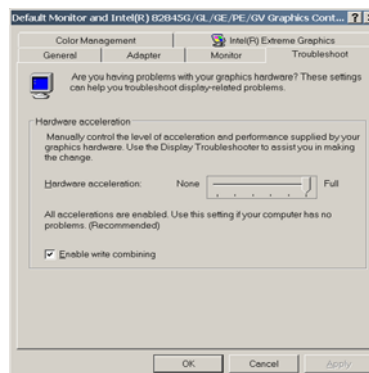
1. Right click on the desktop and select **Properties** from the pop-up window.



2. Click on the **Settings** Tab.



3. Click on the **Advanced** button.
4. Select the **Troubleshoot** tab in Windows XP (**Performance** tab in Win 98)



5. Move the slider on the center of the window to the half way point and click the **OK** button.

**NOTE:** Depending on what video card your workstation has, the windows might not look like the windows pictured in the document, however the tab names will be the same.